



**SÖNMEZ**  
**BUSTAŞ & LOJİSTİK**

## BURSA'S BRIDGE TO EUROPE - SÖNMEZ BUSTAŞ LOJİSTİK

As Sönmez Bustaş, we are on international routes since 1977



"Sönmez Bustaş Lojistik" is one of the leading logistics company in Turkey with 150 vehicle fleet providing with services for warehousing since 1968 and international transportation since 1977 to Europe. Our main businesses are international transportation, warehouse line, coldstore warehousing and frozen food warehousing. Our warehouse is 5000 m<sup>2</sup>, coldstore warehouse is 4000 m<sup>2</sup> and frozen food warehouse is 1500 m<sup>2</sup>. Overall size of warehouses is 13000 m<sup>2</sup> including "Cas Antrepo Nakliye Gümrükleme İthalat İhracat A.S." warehouse Bursa and Gemlik warehouses.

Our company is providing door-to-door logistics services to our customers. We are offering freight services starting from minimum to loading gauges to European countries.

Short term deadlines shows our strength towards our clients.

Logistic warehousing services and oncarriage, together with country to country transportation, customs clearance and bonded warehouse solutions, coldstore warehouse and frozen food warehouse forms the whole business unit.

Sönmez Bustaş & Lojistik contributed tremendously to manufacturers in Bursa in terms of logistics. It became one of the most requested international logistics company mainly for automotive, feed, engine and textile products. In order to meet the requests, we are still working on warehouse and vehicle investments.

Logistics sector continues to gain importance for Turkey day by day. Stages of recession carries high risk for inventory costs. Our companies had the opportunity to see this issue in the past stage of recession that we had. The reason why, continuing inventory monitoring gains more importance for the companies. These costs can be reduced to minimum with logistics companies which can respond to up-to-date demands, instead of inactive warehouses and more or less inventory risks. The effort of the companies to pull down the inventory costs will increase the request of transporting partial freights.





## VEHICLES ON SATELLITE TRACKING

All the vehicles in our company are followed under satellite tracking system and the real location information is transmitted to our clients on the spot via computer.

WEBTRACKS Satko is used for tracking the vehicles that is one of the leading tracking systems which offers high quality service throughout Europe.



## NEW TRUCK CHARACTERISTICS

Trucks consists of environmental and low chassis 460 and EURO 5 standards.



## OUR TRAILERS

Our fleet includes:

- Refrigerated trailer;
- Tarp trailer;
- Double decker tarp trailer;
- Mega Light trailer;
- Express Mini Bus.





# DEKRA CERTIFICATES

**DEKRA Automobil GmbH**

Niederlassung Bielefeld FB: Fahrzeugtechnik / Verkehrsunfallanalyse / Ladegutsicherung  
Otto-Brenner-Str. 168, D-33604 Bielefeld, Tel.: 00 49 / 521 / 2 99 05 - 0, Fax: - 70  
E-Mail: uwe.semsch@dekra.com

DEKRA Automobil GmbH, Otto-Brenner-Str. 168 D-33604 Bielefeld  
Tirsan Treyler Sanayi  
Ticaret ve nakliyat A.Ş.  
Meygil Mekki Adliye Köyü  
TR- Adapazari 54010 Sakarya

Tel.: 0090 264 295 30 00  
Fax: 0090 264 319 25 59  
E-Mail: tahsin@tirsan.com.tr  
Internet: www.tirsan.com.tr

Von: Uwe Semsch An: Tahsin Doğan Bielefeld, 18.09.2012  
00 49 / 152 / 94 99 20 22 9090 5309773844

**DEKRA-Zertifikat**

Bestätigung 313 / 1410 / 702073 / 1812526234 der Aufbaustabilität des  
Tirsan-Kassbohrer-Talson – Sattelauflegers gemäß der  
DIN EN 12642 Code XL Anhang B

**1. Rechtsvorschriften:**

→ § 22 StVO (Straßenverkehrs-Ordnung):	Ladegut ist zu sichern*
→ § 23 StVO (Straßenverkehrs-Ordnung):	Pflichten des Fahrzeugführers*
→ § 30 StVO (Straßenverkehrs-Zulassungs-Ordnung):	Fahrzeugbeschaffenheit*
→ § 31 StVO (Straßenverkehrs-Zulassungs-Ordnung):	Betriebsverantwortung*
→ § 412 HGB (Handels-Gesetz):	

**2. Richtlinien und Normen:**

→ VDI 2700:	Ladegutsicherung auf Straßenfahrzeugen
→ VDI 2700 Blatt 2:	Berechnung der Zurr- und Sicherungskräfte
→ VDI 2700 Blatt 3:	Ladegutsicherungsmittel
→ VDI 2700 Blatt 5:	Qualitätssicherungssystem zur Ladegutsicherung
→ VDI 2700 Blatt 12:	Getränke
→ DIN-EN 12195-1:	Berechnung der Zurr- und Sicherungskräfte
→ DIN-EN 12195-2:	Zurrgurte aus Chemiefasern
→ DIN-EN 12642:	Nutzfahrzeugaufbauten Code XL Anhang A und B
→ Daimler Ladungs- sicherung 9.5	Ladungssicherung beim Transport von Ladungsträgern auf Nutzfahrzeugen im Straßenverkehr

**3. Fahrzeugaufbaukonfiguration:**

Aufbau Hersteller: Tirsan Treyler Sanayi, Ticaret ve nakliyat A.Ş.,  
Meygil Mekki Adliye Köyü, Adapazari 54010 Sakarya – Türkei  
Kassbohrer Fahrzeugwerke GmbH, Siemensstraße 74,  
47574 Goch – Germany  
Talson Trailer BV, Ambachtweg 13,  
5731 AE Merlo – The Netherlands

Typ: 3-Achs-Sattelaufleger mit Schiebepflanzenaufbau

Abmessungen innen: L/B/H: 13.620 mm / 2.480 mm / bis 3.000 mm

Nutzlast: Fahrzeug geprüft bis zu einer Nutzlast von 27.000 kg

Konstruktion: - DEKRA-Dokumentation vom 01. und 02.08.2012  
- TIRSAN information document part 1, 2, 3, 4 vom 31.08.2012

Versuchsreihen: B1205/02 – 1 bis – 5, auf dem Testgelände in Adapazari

**DEKRA Automobil GmbH**

Niederlassung Bielefeld FB: Fahrzeugtechnik / Verkehrsunfallanalyse / Ladegutsicherung  
Otto-Brenner-Str. 168, D-33604 Bielefeld, Tel.: 00 49 / 521 / 2 99 05 - 0, Fax: - 70  
E-Mail: uwe.semsch@dekra.com

DEKRA Automobil GmbH, Otto-Brenner-Str. 168 D-33604 Bielefeld  
Tirsan Treyler Sanayi  
Ticaret ve nakliyat A.Ş.  
Meygil Mekki Adliye Köyü  
TR- Adapazari 54010 Sakarya

Tel.: 0090 264 295 30 00  
Fax: 0090 264 319 25 59  
E-Mail: tahsin@tirsan.com.tr  
Internet: www.tirsan.com.tr

Von: Uwe Semsch An: Tahsin Doğan Bielefeld, 17.02.2014  
00 49 / 152 / 94 99 20 22 9090 5309773844

**DEKRA-Zertifikat**

Bestätigung 313 / 32100 / 702073 / 1815071598-2 der Aufbaustabilität des  
Tirsan-Kassbohrer-Talson – Sattelauflegers  
in Doppeldeckbauweise gemäß der DIN EN 12642 Code XL

**1. Rechtsvorschriften:**

→ § 22 StVO (Straßenverkehrs-Ordnung):	Ladegut ist zu sichern*
→ § 23 StVO (Straßenverkehrs-Ordnung):	Pflichten des Fahrzeugführers*
→ § 30 StVO (Straßenverkehrs-Zulassungs-Ordnung):	Fahrzeugbeschaffenheit*
→ § 31 StVO (Straßenverkehrs-Zulassungs-Ordnung):	Betriebsverantwortung*
→ § 412 HGB (Handels-Gesetz):	

**2. Richtlinien und Normen:**

→ VDI 2700:	Ladegutsicherung auf Straßenfahrzeugen
→ VDI 2700 Blatt 2:	Berechnung der Zurr- und Sicherungskräfte
→ VDI 2700 Blatt 3:	Ladegutsicherungsmittel
→ VDI 2700 Blatt 5:	Qualitätssicherungssystem zur Ladegutsicherung
→ DIN-EN 12195-1:	Berechnung der Zurr- und Sicherungskräfte
→ DIN-EN 12195-2:	Zurrgurte aus Chemiefasern
→ DIN-EN 12642:	Nutzfahrzeugaufbauten Code XL Anhang A

**3. Fahrzeugaufbaukonfiguration:**

Aufbau Hersteller: Tirsan Treyler Sanayi, Ticaret ve nakliyat A.Ş.,  
Meygil Mekki Adliye Köyü, Adapazari 54010 Sakarya – Türkei  
Kassbohrer Fahrzeugwerke GmbH, Siemensstraße 74,  
47574 Goch – Germany  
Talson Trailer BV, Ambachtweg 13,  
5731 AE Merlo – The Netherlands

Typ: 3-Achs-Doppelstock-Sattelaufleger mit Schiebepflanzenaufbau und Bordwand

Abmessungen innen: L/B/H: 13.620 mm / 2.480 mm / bis 2.950 mm

Nutzlast: Fahrzeug geprüft bis zu einer Nutzlast von 27.000 kg  
gemäß DIN EN 12642 Code XL Anhang A

Konstruktion: - DEKRA Dokumentation vom 01. und 02.08.2012 sowie vom 18.07.2013  
- TIRSAN information document part vom 22.11.2013

Versuchsreihen: - B1205/02 – 1 bis – 2 auf dem Testgelände in Adapazari  
- B1307/16 – 2 auf dem Testgelände des Istanbul Park  
- statische Druckprüfung R&D Prototyp Workshop (Tirsan, Adapazari)  
Tirsan Test Report vom 17.12.2013

**DEKRA**

Bestätigung 313 / 32100 / 702073 / 1815071598-2 der Aufbaustabilität des  
Tirsan-Kassbohrer-Talson – Sattelauflegers  
in Doppeldeck-Bauweise gemäß der DIN EN 12642 Code XL

**3. Fahrzeugaufbaukonfiguration**

**Stirnwand:**

bestehend aus: (Zeichn.-Nr.: 1845\_0000\_02\_P1\_A4)  
- 2 Stück Stirnwanddeckungen BHVT ca. 240/260/270 mm; Anbindung an  
den Fahrzeugrahmen links- und rechtsseitig durch je zwei  
Verschraubungen von vorn und von der Seite  
- 1 Stück Fuß-Furnblech, welches mit den Stirnwanddeckungen mittels  
Blindnieten verbunden ist  
- 1 Stück von innen an das Blech angebrachte Stiebrückplatte  
BHVT 2350 / 1225 / 10 mm  
- 2 Stück Stützen für Brems- und Elektroleitungen-Träger, welche von vorn  
an den Fahrzeugrahmen verschraubt sind  
- 1 Stück Brems- und Elektroleitungen-Träger, welcher über seitliche  
Verschraubungen mit den Stützen verbunden ist; weitere Anbindung an  
das Stirnwand-Blech mittels Blind-Nieten  
- 2 Stück Stirnwandnietstützen, mit Stirnwand-Blech verschweißt

**Seitenwand:**

bestehend aus: (Zeichn.-Nr.: 1824\_01\_00\_00\_00)  
- 5 Stück Hestel-VarioMaster-Schiebungen Typ 904 CTD III mit Depot  
und 6 Latenttaschen; Zertifikat AG7011068/2008-18074-2  
- Flansen Platten Schiebepflanze gemäß DIN EN 12641-2; Gewichte 900 g/m²  
und 12 x 12 Fäden; gefaltet; Zertifikat 313/11068/VP110664127  
- min. 3 Stück Alu-Platten Doppel-Hochhammer (nach V-Profil) 2530x130  
mm AlMgSi 0,5 F22 je Rungenfeld; 1 in der ersten, 1 in der dritten und 1  
in der fünften (von unten gesehen) Latenttasche  
- einen Hestel-Stahl-Selensträger CTD II 400 d/mV je Rungenfeld,  
zwischen zweiter und dritter Latenttasche  
- 5+1 Aluminiumordwürden BHVT ca. 230/60/25 + 930/60/25 mm  
AlMgSi 0,5 F22 mit angeordneten Stahlblech (4 mm) TIR-Ringen in D-  
Form (Bild 1 links); Anbindung an den Fahrzeugrahmen erfolgt mittels je  
3 CTS-Schrauben, sowie je links und rechts über ein Verschluß mit den  
Rungen.  
- einen oder mehreren nicht teleskopierbaren Ladebalken je Rungenfeld  
AlMgSi 0,5 F22, abhängig von der Masse der oberen Ladeebene sowie  
von der Kräfte des Ladebalkens und der Stahl-Selensträger; 400 d/mV  
Die Planenbefestigung erfolgt je Bordwand mittels 12 verzinkten Stahl-TIR-  
Ringen (10 fest, 2 beweglich) und durchgezogenem Stahlblech (8 mm).  
Zusätzliche Anbindung über gesamte Länge mittels 17 Gurtchüsseln in  
einem Abstand von nicht mehr als 820 mm und 3mm dicken Platten  
S355J203C (Bild 2 links), welche in die TIR-Ringe eingeklappt werden.

**Heckportal:**

bestehend aus: (Zeichn.-Nr.: 1847\_0001\_02\_P1\_A4)  
8904.00.00.00)  
- 2 Stück Heckdeckungen BHVT ca. 260/260/30 mm  
- 2 Stück Dreh-Portaltüren  
a) in Sandwich-Bauweise mit Alu-Einlassprofilen; Türen von innen  
und außen mit den Profilen verklebt und an den Ecken jeweils  
verriegelt  
b) aus je 6 Aluprofilen BHVT ca. 205/300/20 mm AlMgSi 0,5 F22 mit  
Alu-Einlassprofilen von außen und innen mit je 14 Nieten verriegelt  
- zwei Drehstangenverschleißsen je Türbleib; Anbindung der Drehösen an  
die Heckdeckungen mittels 5 Schrauben je Türbleib







## OUR DIFFERENCES



☎ Our company is one of the most important companies in the region. With the headquarters in Bursa and İstanbul and with İzmir Branch, Sönmez Bustaş & Lojistik is aware about the issues in the industry and ready to solve these problems, the company is being partner to our clients.

☎ We care about Bursa's historical and cultural heritage advertisement, therefore you can see Bursa images on all our vehicles.

☎ Our leading company continues to provide high quality services to our clients on warehousing since 1968 and international transportation since 1977.





## OUR SERVICES IN INTERNATIONAL TRANSPORTATION

Sönmez Bustaş & Sönmez Lojistik companies is offering import and export services as below:



- ☉ Full truck transportation;
- ☉ Partial load transportation;
- ☉ Refrigerated load transportation;
- ☉ Low Bed and Project transportation;
- ☉ Temperature needed any load, chemical and flammable product transportation;
- ☉ Special Express load transportation;
- ☉ Sea Freight organization services;
- ☉ Dry Cargo (Logistic) free warehousing services;
- ☉ Coldstore warehousing, storage and flash-freezing of frozen food;
- ☉ Bonded warehouse – Dutiable cold and frozen food services.



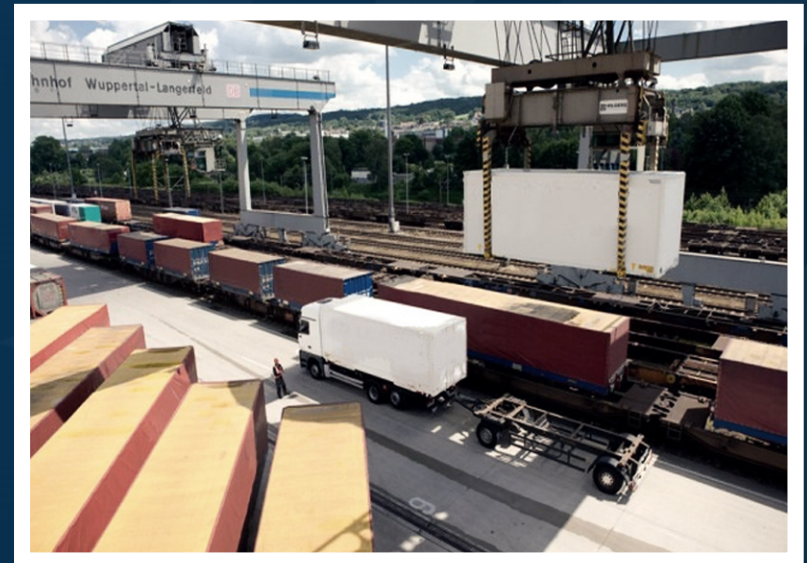
## FULL TRUCK TRANSPORTATION



We provide door to door complete services for full and group transportation, hanged transportation, overseas distribution, collecting and warehousing organization via land transportation to all European countries and from these countries to Turkey. We can offer high range of services including vehicle parking, hanged textile carrier, refrigerated vehicles and high volume tilted vehicle

## RAILWAY TRANSPORTATION

The intention of founding Sönmez Lojistik railway department; To reduce the cost of logistic expenses which takes high portion of production cost for our clients, accordingly, we started to run the department to increase the competency for our customers. In accordance to this activity, we are here to deliver the best services with our professional staff. The containers with transit timeframe 7-8 days to Europe are taken with land transportation from the shipper's door off with 45'HC equipments, delivered to distribution stations based in Turkey and Europe and these containers are loaded from these stations to scheduled merchandise trains to be sent to the destination. The containers who arrived to the destination are sent to the consignee via land transportation. During this process, the vehicle has the equipage to be tracked for security purposes





## PARTIAL LOAD TRANSPORTATION



Multiple storey adjustable shelf, sliding skeleton system and mega semi-trailer vehicles have %30 more capacity to be loaded. With these features, products of different dimension and nature are loaded without touching each other and it prevents any damage during transportation. The loading and off loading can be made easier by fixed floor height platforms.

## REFRIGERATED LOAD TRANSPORTATION



We offer transportation services for any kind of vegetable, fruit, feed and industrial goods which is necessary to be transported between -27 to +27 degrees without breaking the cold chain.



## LOW BED AND PROJECT TRANSPORTATION



To respond to the need for excessive loading gauge, our company takes place in every kind of projects. In low bed projects, safety and on time delivery are taken into consideration.

## TEMPERATURE NEEDED ANY LOAD, CHEMICAL AND FLAMMABLE PRODUCT TRANSPORTATION



In order to carry the perishable feed goods, we make use of special vehicles (refrigerated) and based on ATP agreement, in every refrigerated vehicle, the ATP certificate which shows the appropriate technical specifications is provided. The goods which are refrigerated in coldstore warehouse and reached to the required temperature, are transported by securing the temperature. In all the refrigerated vehicles, there is the temperature recording machine, which allows the client to keep the record of the temperature (-27 to +27). All the goods that requires to be transported in a specific temperature can be delivered in requested temperature.







## SPECIAL EXPRESS LOAD TRANSPORTATION

In order to deliver on time, we offer special express and refrigerated transportation with mini buses, trucks and pickup trucks for urgent and not exceeding the tonnage.



## SEA FREIGHT ORGANISATION SERVICES

Sönmez Lojistik sea freight department owns the structure, technical and professional staff to take your delivery from Turkey or from any other part of the world , to send and deliver to the destination with the best fitting ships.

For sea container transportation, we can offer numerous options to fulfill your needs for transit timeframe and charges for freight due to our close relationship with the world's most accredited carrier companies. With the contracts that we obtained, we can always offer you the transportation service that you wish with best price and professional service. Besides, we provide domestic transportation from plant to port / port to plant with our own special semi trailers.



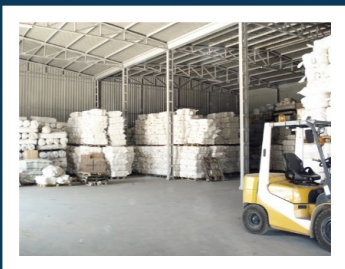
## WAREHOUSING SERVICES



- ☛ Dry Cargo (Logistic) – Free Warehousing Services;
- ☛ Coldstore Warehousing, Storage and Flash-Freezing of frozen food;
- ☛ Bonded Warehouse – Dutiable Cold and Frozen Food Services

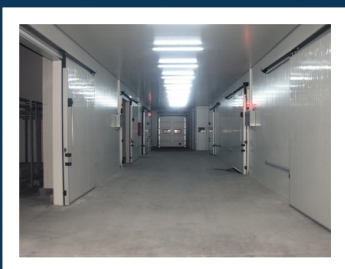






## DRY CARGO (LOGISTIC) – Free Warehousing Services

It provides the required logistic support for no temperature needed goods on requested time by securing in groups. Depositary warehousing is provided for all kind of feed and industrial goods.



## Coldstore Warehousing, Storage and Flash-Freezing of Frozen Food

All kind of vegetables, fruits and industrial goods which needs to be maintained in coldstore warehouse and frozen food storage between -25 to +25 can be preserved and all kind of goods which needs to be flash-frozen can be done down to -40 degrees.



## Bonded Warehouse – Dutiable Cold and Frozen Food Services

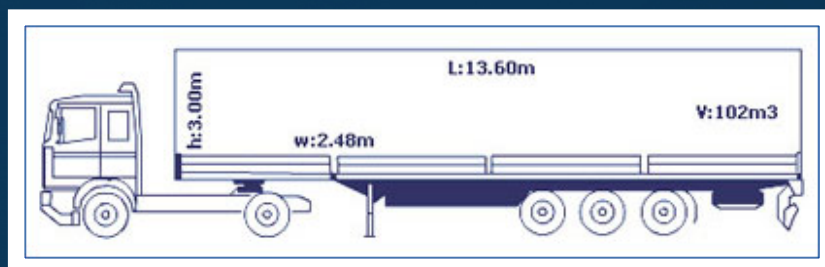
Our bonded warehouse, CAS Antrepo, operates in General Bonded Warehouse type A, with simplified procedure and application. All kinds of packaged goods are stored safely such as frozen and fresh goods (between -25 and +25 C ) as well as goods that include metal and mineral products..

( For details see: [www.casantrepo.com.tr](http://www.casantrepo.com.tr) )

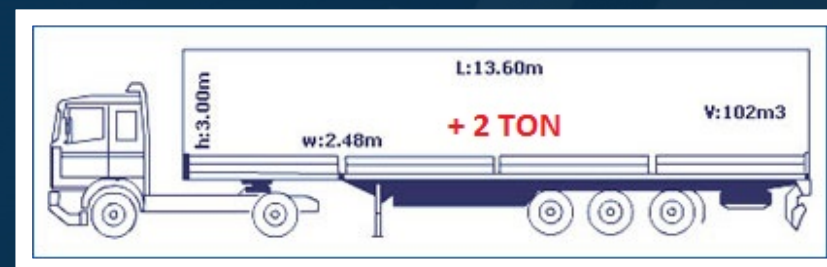


## OUR VEHICLE FLEET

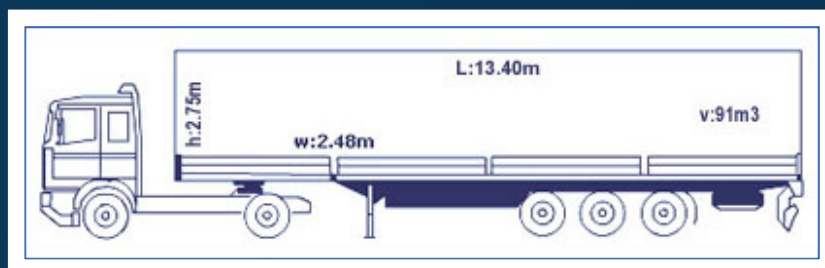
Mega Tilted



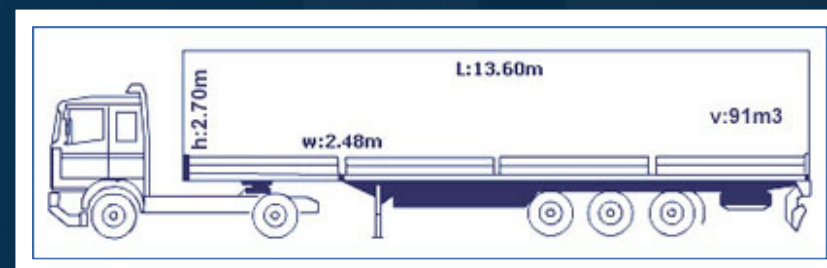
Light Mega Tilted



Refrigerated Trailer



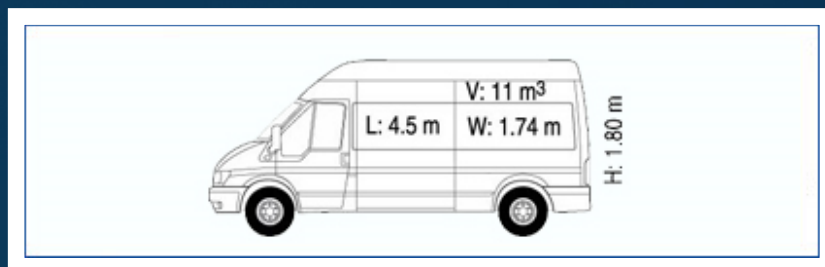
Tilted Semi-Trailer



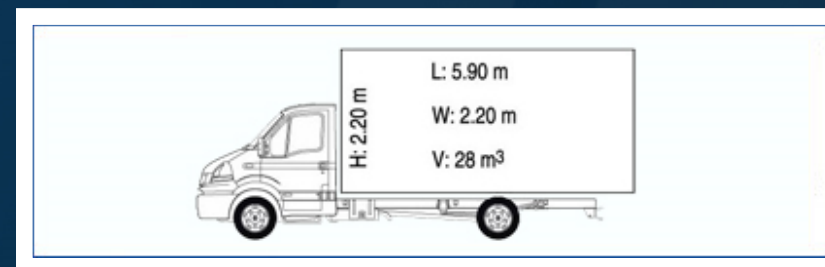


## OUR VEHICLE FLEET

Express Minivan



Lorry - Van



## TRANSIT TIME OF THE EXPRESS SERVICES

- ⌚ The advantages of our service – It is faster than Air Cargo and it is more affordable in terms of cost.
- ⌚ The service time for some countries:
- ⌚ Bulgaria – 12 hours;
- ⌚ Romania – 24 hours;
- ⌚ Slovakia – 36 hours;
- ⌚ Slovenia – 36 hours;
- ⌚ East Europe and Balkan countries approximately - 36 hours
- ⌚ Germany – 48 hours;
- ⌚ Austria – 40 hours;
- ⌚ Netherlands – 48 hours;
- ⌚ France – 55 hours;
- ⌚ Spain – 65 hours;
- ⌚ Europe approximately – 50 hours;
- ⌚ All the information provided above are based on accomplished trips.





## TRANSIT TIME OF THE TRUCKS

Delivery Area	Partial/ day	Full / day
Austria	6	5
Germany	7	6
Switzerland	8	6
Greece	2	2
Belgium	8	6
Netherlands	8	6
France	8	6



## OUR QUALITY POLICIES

Our company which applies ISO 9001 Quality Management System, in order to fulfill the growing customer needs completely and with the best price is looking to:

- Disperse the consciousness of quality to our staff and suppliers;
- Use all the new technologies which will add value to our clients and partners;
- Accept the customer trust as our main exingency;
- Maintain and develop the technical structure which is established to become one of the leading companies in coldstore warehousing, warehousing and logistics together with our experienced staff and team work;
- Respect the ethical values by behaving environment friendly and with social responsibilities;
- Assure the satisfaction of clients, staff and all the other shareholders;
- Meet the legal requirements in the countries that we work with;
- Offer affordable cost and efficient services to our clients;
- Always improve our service quality, structure and processes.



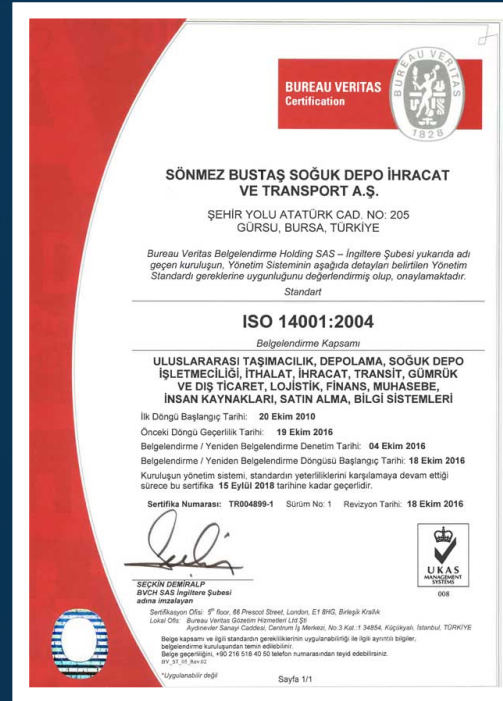


# CERTIFICATES

## Sönmez Bustaş ISO 9001



## Sönmez Bustaş ISO 14001



## Sönmez Bustaş OHSAS 18001







## QUALITY CERTIFICATES

ISO 9001, ISO 14001, OHSAS 18001



BV Certification ISO 14001



BV Certification OHSAS 18001



IOS 9001



## YYS AND ISO 27001 CERTIFICATES

Getting soon...

